



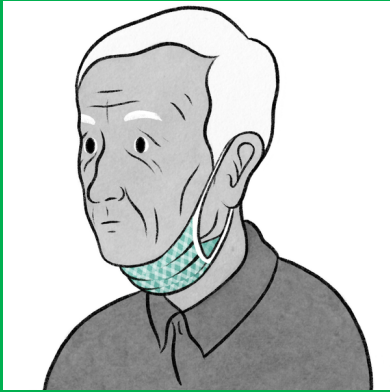
San Diego Fire-Rescue Incident Management Team

How NOT to Wear A Cloth* Mask

*Not for use on Medical Aids

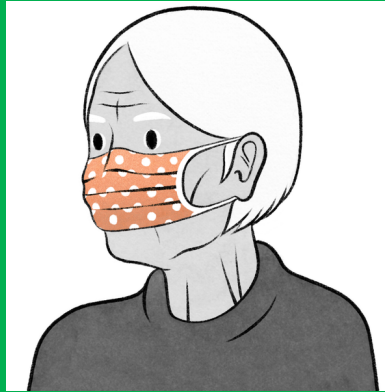
DON'T:

Wear your mask under
your chin



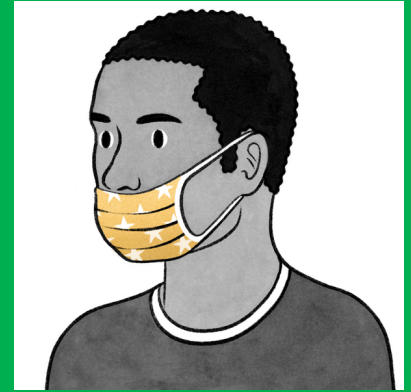
DON'T:

Leave your chin exposed



DON'T:

Wear your mask below
your nose



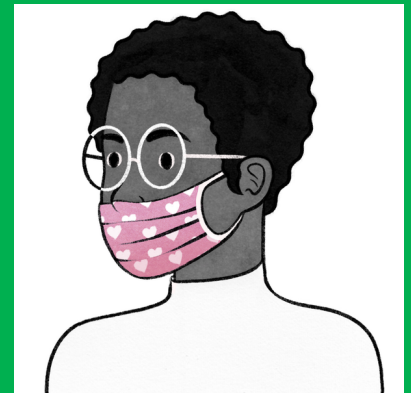
THE OUTSIDE FABRIC IS THE GERM FILTER



DON'T:

Wear your mask loosely
with gaps on the sides

- If you fidget with the mask, you may spread germs or viruses to your face and hands
- If you don't wear it properly, you're providing a route of entry



DON'T:

Wear your mask so it
covers just the tip of the
nose

These masks are primarily to protect others from you,
however, proper wearing to minimize your exposure and
cross-contamination is highly recommended

